

Anaphylaxis care and follow-up among paediatric patients in the UK

L. Regent, G. Brocklehurst

Key message

Families are four times more likely to get the support, resources and guidance to manage their child's allergy when referred to an allergy clinic for anaphylaxis care, compared to those who are not. It is therefore concerning that a significant proportion of children that present to their GP or A&E for the first time with an allergic response are not receiving a referral to an allergy clinic, nor being signposted to support from patient organisations to help them manage their child's allergy.

Objective

The Anaphylaxis Campaign conducted a patient survey on the quality of allergy care in the UK. The objective was to identify current gaps in the standard of care, with a view to addressing these gaps with enhanced support and information.

Methods

Patients or parents/carers of children who had an episode of anaphylaxis or were deemed at risk were questioned on their experiences of care, including referral times, advice and support. The survey was open for 6 months. The responses from parents and carers (self reported) on behalf of their respective children are presented here.

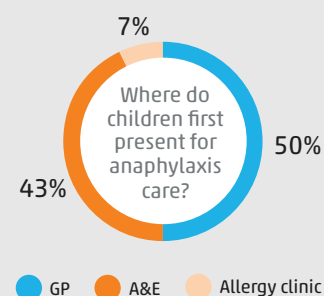
Conclusions

The clinical experiences of paediatric patients, as reported by their parents and carers, indicate a suboptimal standard of care. A minority of patients are advised on allergy avoidance when presenting to general practice, and an even smaller proportion are informed about the support resources available. All too frequently, patients presenting to general practice or A&E are not referred to an allergy clinic. More must be done to care for young people at risk of anaphylaxis.

Results

Respondents

Of 1217 respondents, 655 were parents/carers responding on behalf of a child aged up to 16 years. There was a good geographic spread across the UK. In total, 80% had experienced anaphylaxis. Half (50%) of patients first presented at general practice, 43% at A&E and 7% at an allergy clinic.



Parent and carer responses to survey

