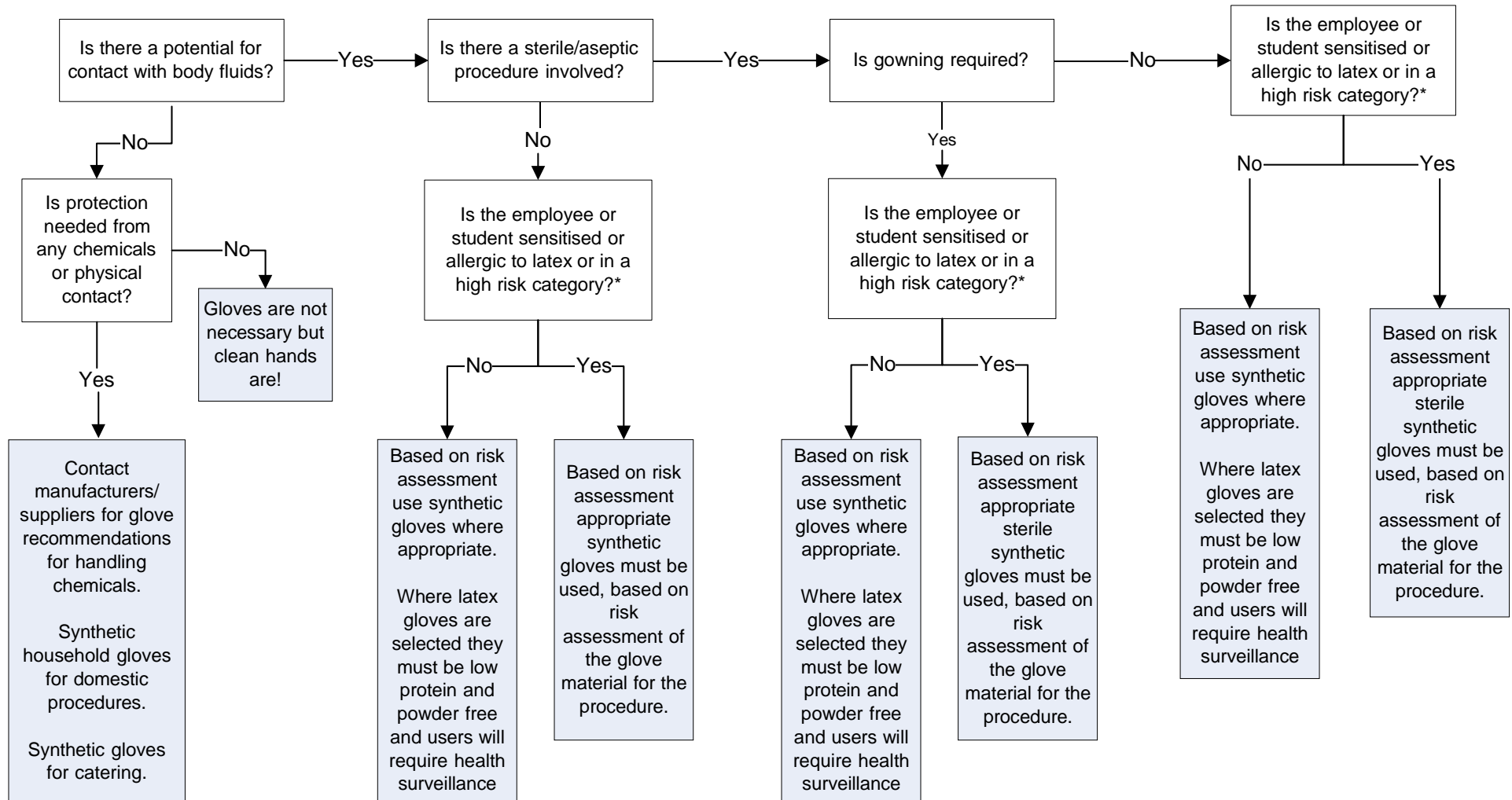


Guidelines for glove selection

Employers are required to perform a full risk assessment, considering the benefits of available glove materials. This chart is not intended for use by individuals at the point of glove use when time is unavailable for evidence based assessment of risk.



* A high risk category is someone with diagnosed latex allergy; suspected latex allergy; multiple allergies to other materials or multiple surgeries
 Reproduced courtesy of the University of Manchester Occupational Health Services

